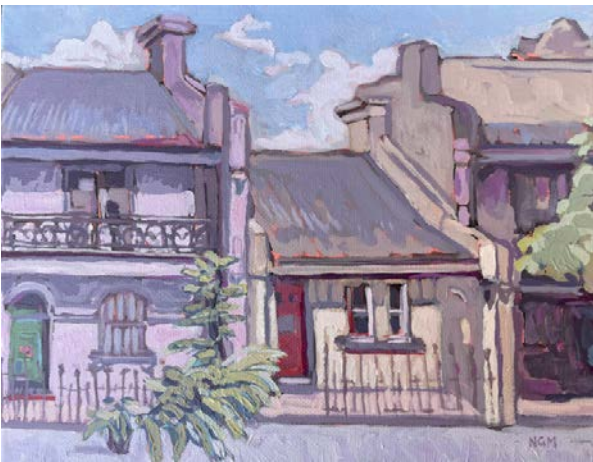


HOME DELIVERY
A COLLECTION OF HOUSES
INSPIRED ART

catalogue



Purple Noon Gallery

August 3 - 31, 2024

0409 661 662



VISITING

Purple Noon Gallery

Opening hours

Thursday-Friday
11am - 4 pm

Saturday-Sunday
11am - 4pm

ONLINE 24 hours

606 Terrace Road
Freemans Reach NSW 2756

All enquiries to Robyn
0409661662
robyn@purplenoongallery.com.au

We partner with



Group Exhibition

Artists

Anna Henderson

Greg Hansell

Harley Manifold

Jacki Fewtrell Gobert

James Lyle

Kobie Bosch

Melissa Guest

N G Malla

Petra Reece

Scott Owen

ANNA HENDERSON



Behind Closed Doors I
mixed media on canvas
34.5 cm x 34.5 cm including frame.
\$850



Behind Closed Doors II
mixed media on canvas
34.5 cm x 34.5 cm including frame.
\$850



Behind Closed Doors III
mixed media on canvas
34.5 cm x 34.5 cm including frame.
\$850

GREG HANSELL



Vacluse House

80 x 100 cm

earth pastel

framed under glass

\$8,000



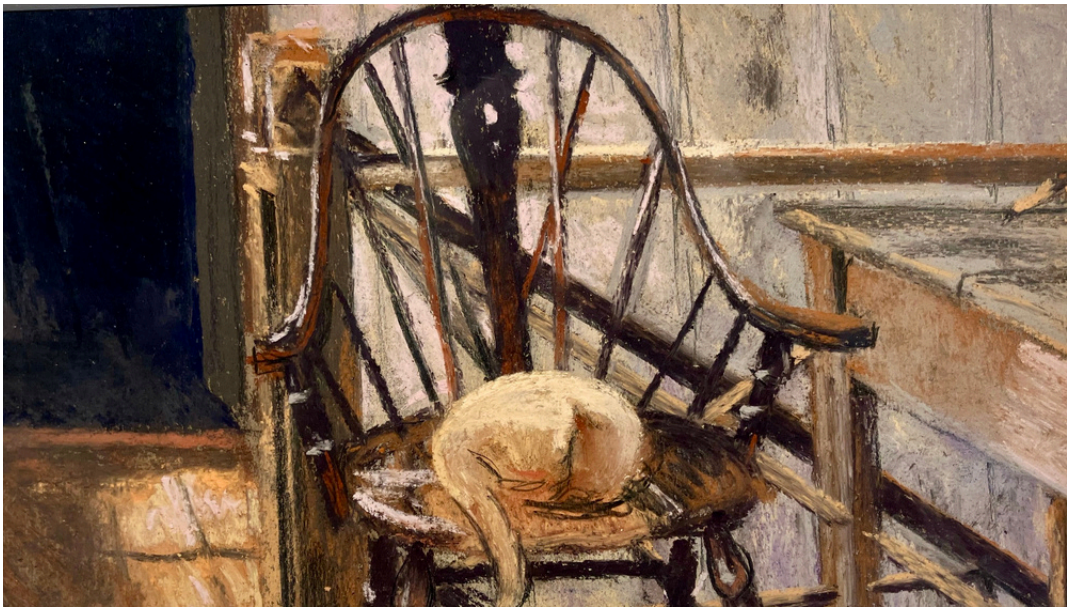
Jazz at Government House

earth pastel

55 x 65 cm

\$4,500

Enquiries to Robyn 0409661662



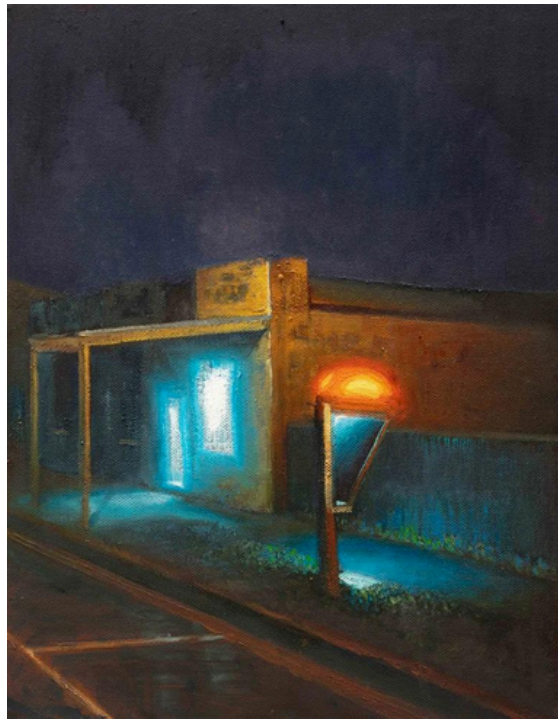
William, A big day in

12 x 22 cm 2010

earth pastel

\$1,100

HARLEY MANIFOLD



Good+for+the+footy

35 x 28 cm

oil on canvas

\$1800

JACKI FEWTRELL GOBERT



Early morning in the conservatory

79 x 63 cm

acrylic on canvas, framed

\$990

Enquiries to Robyn 0409661662



Heritage Home
63 x 63 cm
acrylic on canvas
\$790



Brooklyn Property
48 x 48 cm
acrylic on canvas, framed,
\$690

Enquiries to Robyn 0409661662

JAMES LYLE



Lachlan Terraces near
the Vic
51 x 41 cm,
oil on canvas, framed
\$1200



Frosty Start.
Havannah Street, Bathurst
31 x 23 cm
oil on linen, framed
\$800

KOBIE BOSCH



The Ensemble
78 x 103 cm
oil on canvas, framed
\$3600



Liminal Spaces

78 x 103 cm

oil on canvas, framed

\$3600

Enquiries to Robyn 0409661662

MELISSA GUEST



William and Ada's Affair

79 x 64 cm,

acrylic and mixed media on canvas, framed

\$2300

Enquiries to Robyn 0409661662



Bourke Street Bakery with Ursula

54 x 54 cm,

acrylic and mixed media on canvas, framed

\$1700



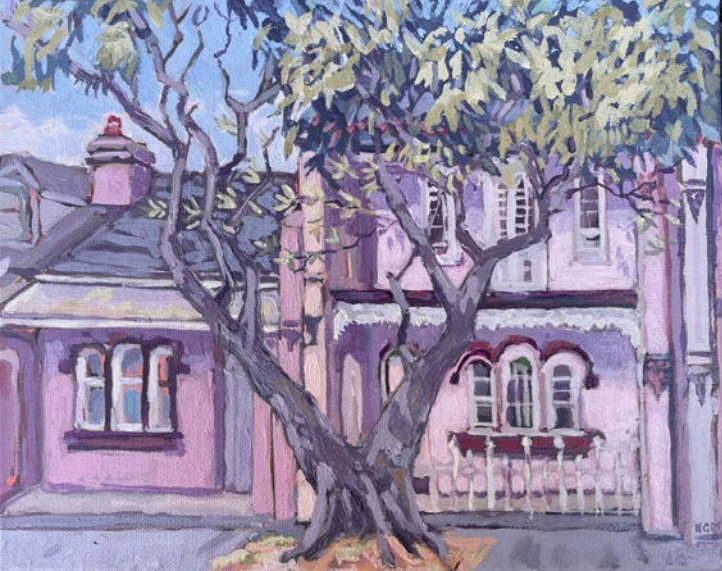
Tea at Peters

54 x 54 cm

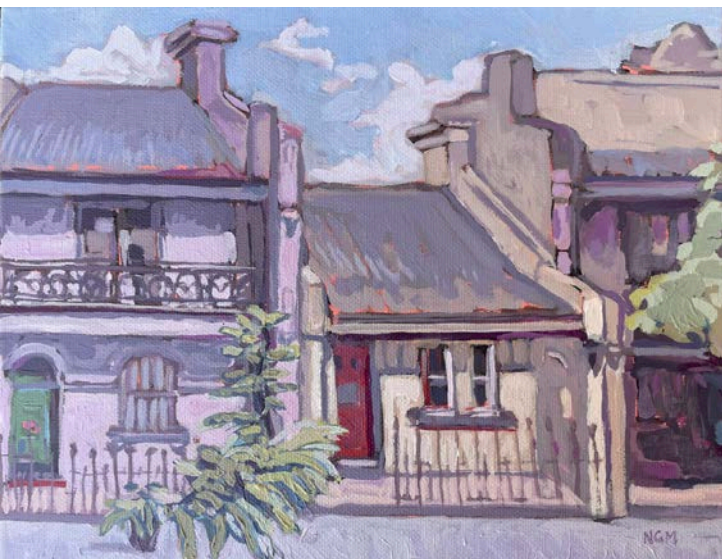
acrylic and mixed media
on canvas, framed

\$1700

NG MALLA

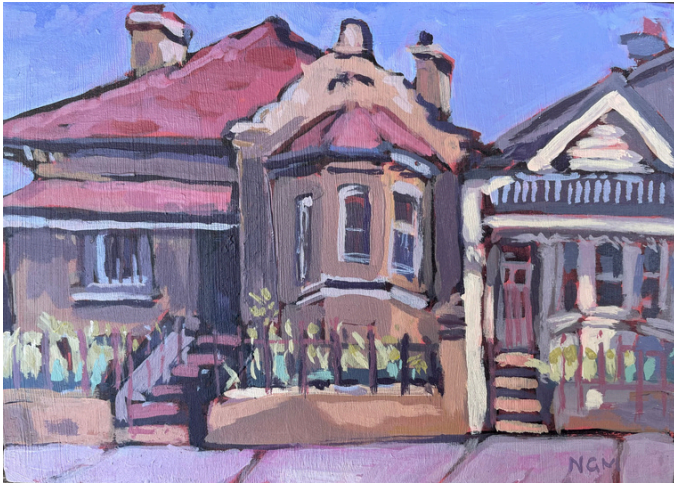


Chippendale I
26 x 20 cm
acrylic on canvas,
oak frame
\$495

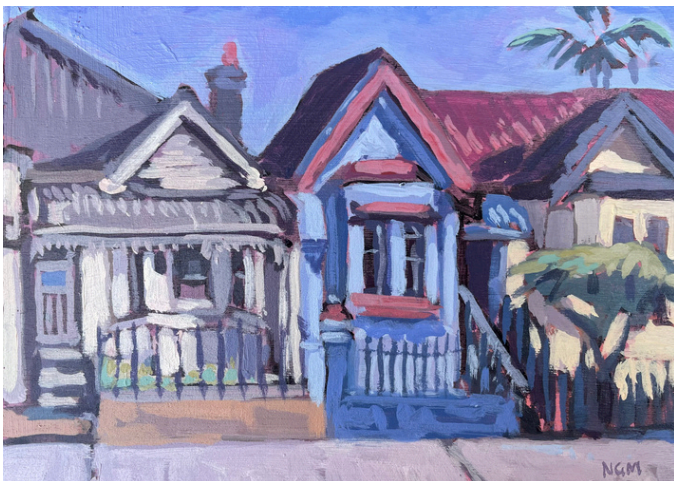


The Green Door
20 x 26 cm
acrylic on canvas,
framed
\$495

Enquiries to Robyn 0409661662



The yellow house
18.5 x 13.5cm
acrylic on board
Oak frame
\$385



The blue house
18.5 x 13.5cm
acrylic on board
Oak frame
\$385



Pink Dream House

92 x 107 cm

oil on linen

\$3,500

Enquiries to Robyn 0409661662



Outback Farm

77 x 101 cm

oil on canvas

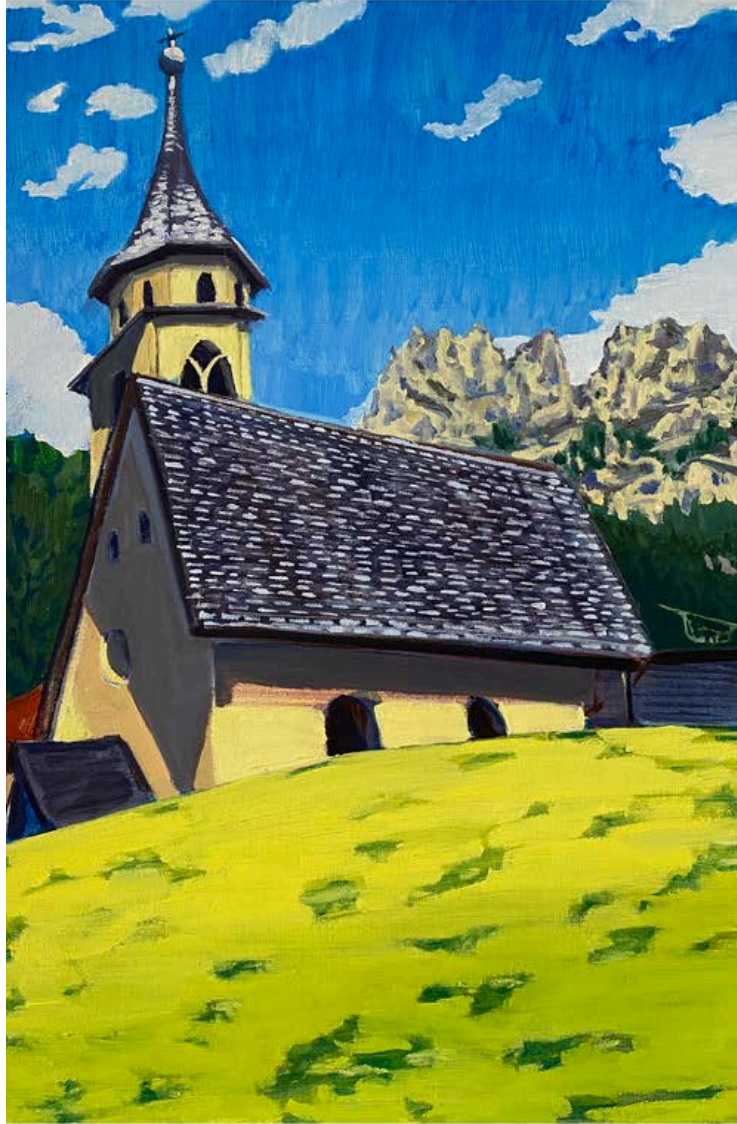
\$2,500



Sunlit
61 x 66 cm
oil on canvas
\$2,500

Enquiries to Robyn 0409661662

SCOTT OWEN



Breezy Afternoon

60 x 40 cm

oil on linen,

\$800



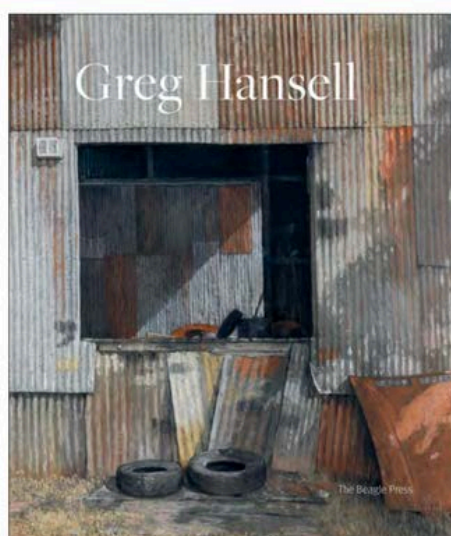
'24
40 x 30 cm
acrylic on panel
\$450

Enquiries to Robyn 0409661662

THE BOOK

GREG HANSELL PURITY OF AUSTRALIAN LIGHT

Greg Hansell is a landscape painter known for his exclusive devotion to pastels, some of which he makes himself. He is best known for his corrugated iron subject matter which features frequently in his work. He is the Art School Director of The Royal Art Society Art, where he has been teaching since 1997. Hansell has lived in the Windsor and Hawkesbury district for many years, where he has a house, studio and a large flourishing garden which often features in his work. His interest in this historic part of NSW stems from its association with Arthur Streeton and Charles Conder who worked in the area in the heyday of Australian landscape painting. His most recent works, the result of a greater freedom in his use of pastels, are an impressive series of landscapes which have extended the direction of his work. He has been hung in the Art Gallery of New South Wales Wynne Prize numerous times and is twice winner of the Mosman Art Prize. This book covers Hansell's work from 1982 to the present day. It has an introduction by Lou Klepac who selected the works, an essay by Carol Roberts, and recollections and notes by the artist.



Greg Hansell: The purity of Australian Light

Author: Lou Klepac/Carol Roberts

The Beagle Press

Hardcover - full colour plates

\$79

Enquiries to Robyn 0409661662

THE CERAMICS

ANNA HENDERSON



Ceramic House I

H: 15 cm

W: 8.5 cm

L: 11.5 cm

\$240

Enquiries to Robyn 0409661662



Ceramic House II

H: 15.5 cm

W: 6 cm

L: 14 cm

\$230



Ceramic House III

H: 14.5 cm

W: 5 cm

L: 12 cm

\$220



Ceramic House IV

H: 34 cm

W: 12 cm

L: 14.5 cm

\$450

Enquiries to Robyn 0409661662



Ceramic House V

H: 32 cm

W: 13 cm

L: 14 cm

\$430

PURPLE NOON GALLERY

Enquiries: Robyn Williams

T: 0245 796579

M: 0409 661662

robyn@purplenoongallery.com.au

www.purplenoongallery.com.au